

SCOTT

SLIMISSIMO & MILK
Instruction Manual
Model no.: 20210



IMPORTANT INFORMATION

For safety purposes, you should read the instructions carefully before using the appliance for the first time. Save the instructions for future reference.

The appliance is designed for domestic use and may only be operated in accordance with these instructions for use.

Always handle with care and warn other users of the potential danger.

Danger: The appliance can cause injuries if misused.

DO'S

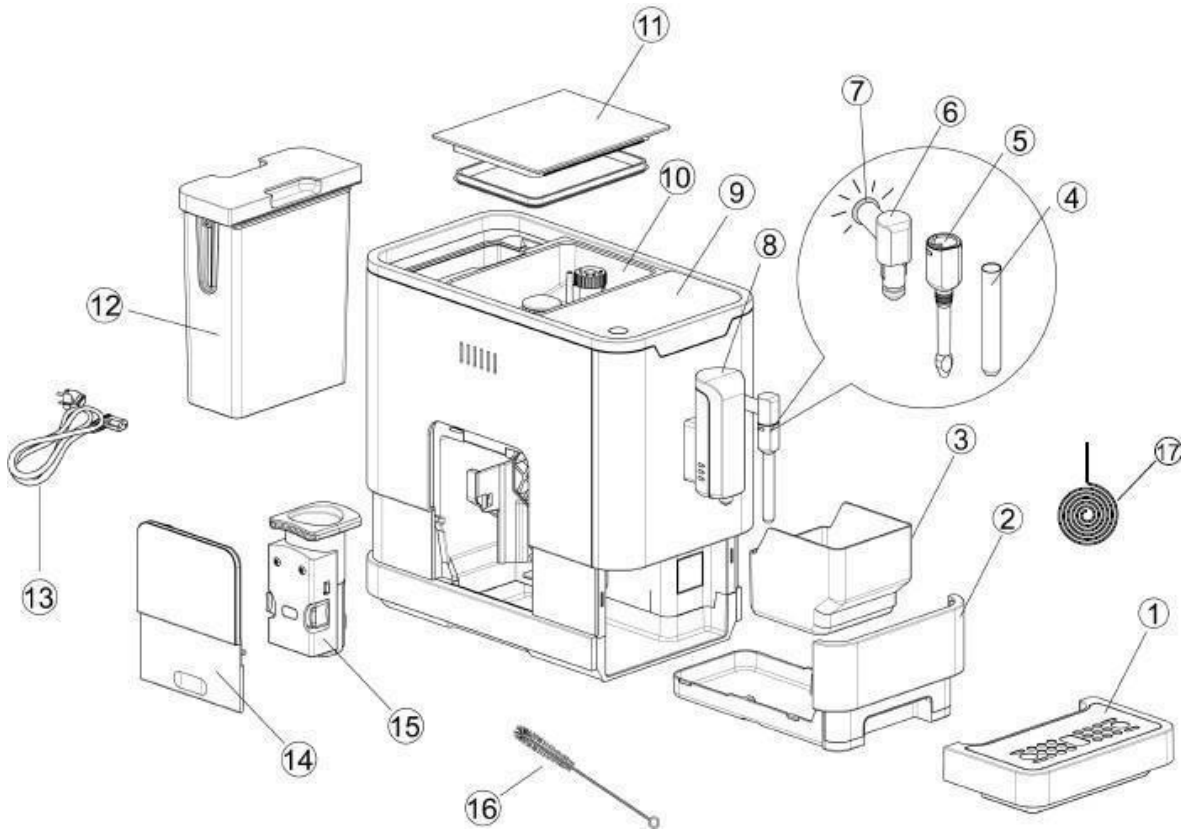
1. Check that the mains voltage of the appliance stated on the rating plate is suitable for the local mains supply.
2. Ensure all packaging materials, labels and stickers are removed from the appliance before the first use.
3. Unwind and straighten the power cord before using the appliance.
4. Place and use the appliance on a dry, flat and stable surface.
5. Use the appliance only in areas where trained personnel can monitor the operation.
6. This appliance is not intended for use by persons with reduced physical, sensory or mental capabilities, or lack of experience and knowledge, unless they have been given supervision or instruction concerning the use of the appliance by a person responsible for their safety.
7. Disconnect the appliance from the mains supply outlet under the following conditions:
 - Before filling the water tank.
 - Before removing any parts from the appliance or refitting any parts inside the appliance.
 - Before cleaning or carrying out maintenance.
 - When the appliance is not working correctly.
 - After using the appliance.
8. Empty the water tank if the appliance is not in use for a long period of time.
9. Allow the machine to cool before putting on, taking off parts, before cleaning, or storing the appliance.
10. Always use tap water or distilled water to make coffee or fill up the tank. Warm water, hot water, or other liquids can damage the appliance.
11. Use the grinder for grinding coffee beans only.
12. Always ensure that your hands are dry before removing the plug from the mains socket.
13. If the power cord is damaged, it must be replaced by the manufacturer or its service agent or similarly qualified person in order to avoid any hazard.
14. This appliance is intended for household and domestic use only.
15. The plastic bags used to wrap this appliance or the packaging may be dangerous. To avoid risk of suffocation, keep these bags out of reach of babies and children. These bags are not toys.

DO NOT's

1. Do not use or place the appliance on a wet or hot surface, near hot ovens, electric and gas burners.
2. Do not use an extension power cord set unless a competent authority has approved it.
3. Do not leave the cord hanging over the edge of a kitchen table, work top or touch hot surfaces.
4. Do not let children play with the appliance or the appliance's power cord whilst the machine is in use.
5. To protect against fire, electric shock and injury, do not immerse the appliance, power cord or plug in water or other liquids.
6. Do not put the appliance in the dishwasher.
7. Do not cover the appliance when in use.
8. Do not operate the hot water function continuously for more than one tank of water.
9. Do not unplug the appliance by pulling the power cord from the mains supply.
10. Do not operate the appliance if the drip tray is improperly placed in position.
11. Do not operate the appliance if the power cord or plug has been damaged or if the appliance malfunctions or is damaged in any way. Contact the service agent when in doubt.
12. Do not attempt to open the main body or dismantle any parts from the appliance, there is no serviceable part inside.
13. Do not use any accessories or attachments with this appliance other than those recommended by SCOTT.
14. Do not insert fingers or other objects into the grinder.
15. To disconnect from the mains supply outlet, do not drag the cord itself. Pull by the head of the plug.

GET TO KNOW YOUR AUTOMATIC COFFEE MACHINE










I. GENERAL DESCRIPTION






1.	External drip tray	10.	Coffee bean container
2.	Internal drip tray	11.	Coffee beans container cover
3.	Coffee grounds container	12.	Water tank
4.	Metal tube	13.	Power cord
5.	Nozzle cover	14.	Service door
6.	Steam nozzle	15.	Brewer
7.	Steam indicator light	16.	Cleaning brush
8.	Adjustable coffee spout	17.	Needle
9.	Control panel		

CONTROL PANEL



	Flashing: Low water level or water tank is missing
	Lack of coffee beans
	Lighting up stably: Coffee grounds container is full Flashing: Internal drip tray or coffee grounds container is missing
	Lighting up stably: Brewer is missing or installed improperly Flashing: Service door is opened or installed improperly
	Lighting up stably: Requires undergoing the descaling process Flashing: Descaling is under process
	Empty system function is under process
	Power ON/OFF button
	Extra strong coffee button
	Steam button

	Hot water button
	Espresso button
	Lungo button

Note: The touch-sensitive area is located at the lower part of icons. Press the touch-sensitive area firmly in front of the appliance.

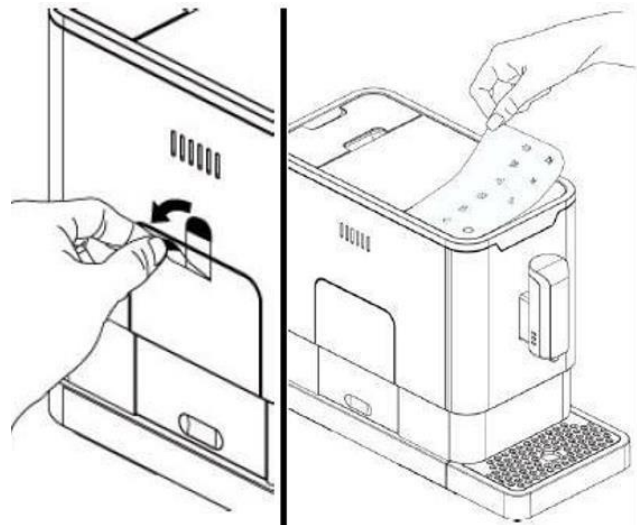


ACCESSORIES

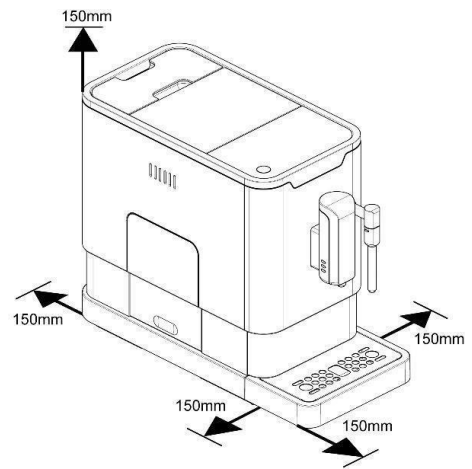
In the box, three packs of cleaning agents are included for the process of self cleaning. More packs of cleaning agent can be bought from our website www.scott-gear.co.uk.

MACHINE INSTALLATION

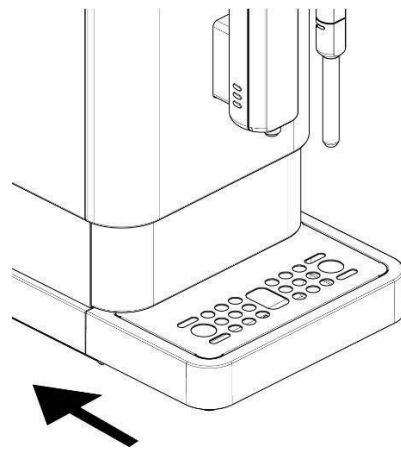
1. Remove all protective films, stickers and other packaging materials from the appliance.



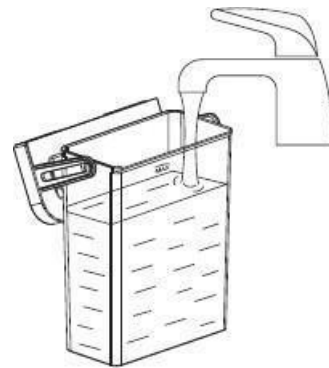
2. Place the appliance on a safe and stable surface with an easily reachable power supply and allow minimum distance from the sides of the machine.



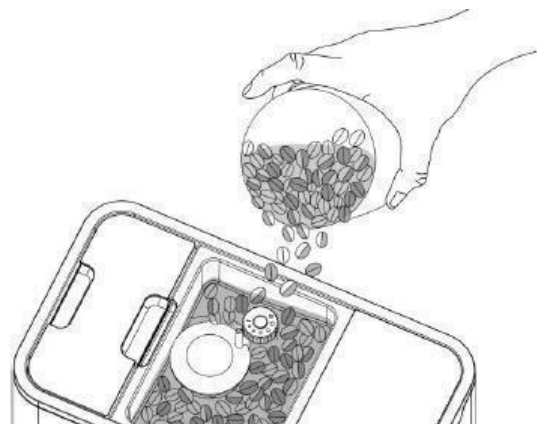
3. Insert the external drip tray. Make sure it is inserted properly.



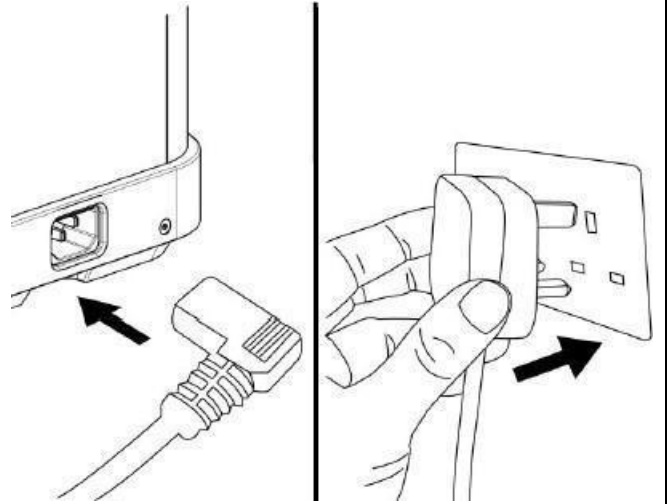
4. Fill the water tank with water.




5. Fill the coffee bean container with coffee beans.




6. Unwind and straighten the power cord and insert the plug into the socket located at the back of the machine. Insert the plug into a wall socket with suitable power voltage.



FIRST TIME USE

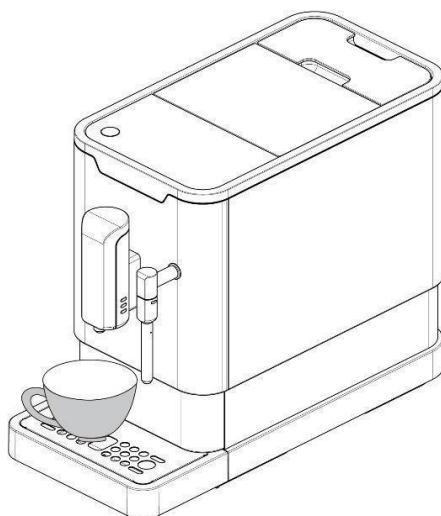
Press the hot water button  to clean the inner parts of the coffee machine before use.



Note: Press the hot water button  any time to stop the machine from dispensing hot water and to start coffee making.

OPERATION


MAKING YOUR COFFEE

1. Switch on the appliance by pressing the Power ON/OFF button.
2. The appliance is in standby condition.
3. Place a cup under the coffee spout and adjust the height of the spout to fit the cup. Depending on the size or height of the cup, remove the drip tray or adjust the position of the drip tray as below:



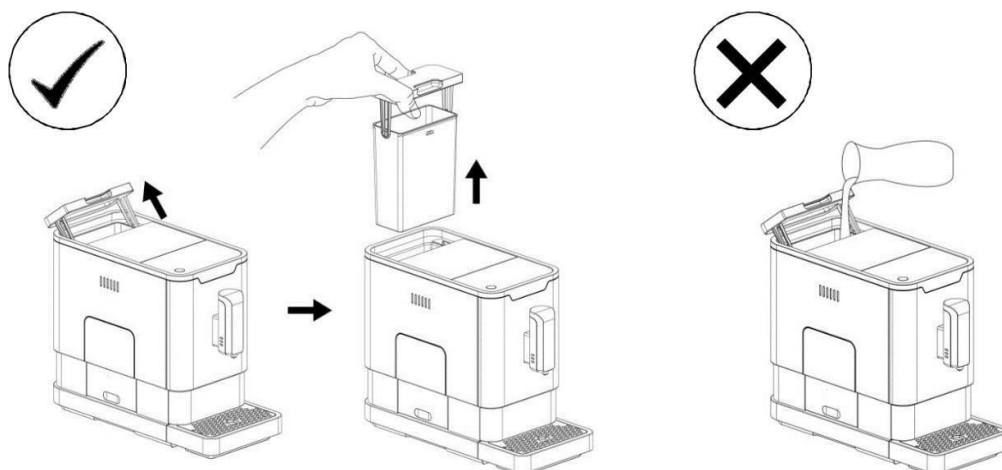
4. According to your preference, press Espresso button  or Lungo button  once.
5. The button will flash after being pressed. It will then light up to indicate that the appliance is preparing the coffee.
6. When the appliance resumes to standby condition, the coffee is ready to serve.

FILLING THE WATER TANK

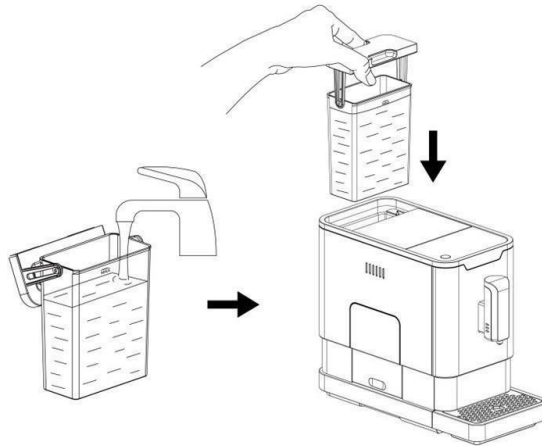
When  is flashing, the water level in the water tank is too low and filling is necessary.

1. Use the integrated handle on the lid to lift the water tank.

Note: To prevent overflow of water from the water tank, do not fill water directly into the container.




2. Rinse the water tank with fresh water and fill the tank to the “MAX” level. Place it into the machine and make sure it is fully inserted.

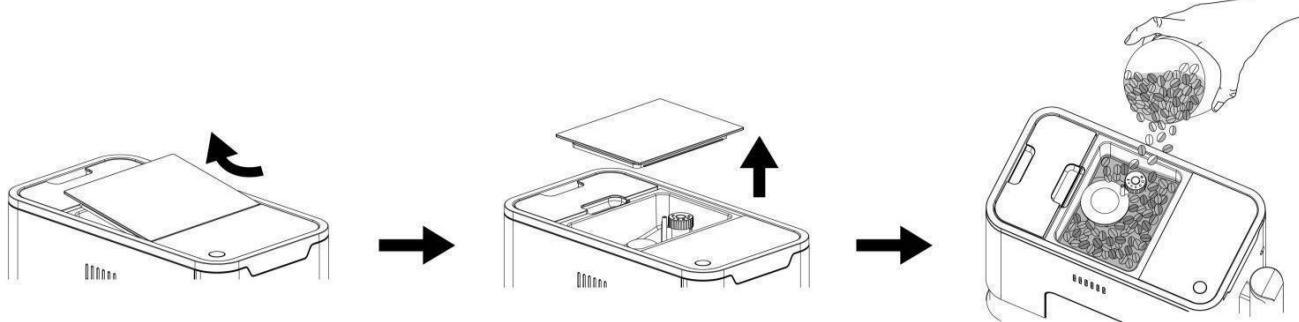


Important: Never fill the water tank with warm, hot, sparkling water or any other liquids which can damage the water tank and the machine.

FILLING THE BEAN CONTAINER

When  is flashing, the appliance needs to be filled with coffee beans.

1. Remove the bean container lid.



2. Slowly pour in the coffee beans.
3. Place the bean container lid to its original position.

Important: Fill the coffee bean container with coffee beans only. Do not use ground coffee, instant coffee powder, caramelised coffee beans and any other objects.

PREPARING EXTRA STRONG ICED COFFEE

Before making extra strong iced coffee, prepare ice cubes and cold water.

1. Add ice cubes to a tall glass and place the glass under the coffee spout.



2. Press the Extra strong coffee button.
3. The button being pressed will light up, indicating that the appliance is successively preparing two cups of coffee.
4. When the appliance is back to its standby condition, the process is complete. Stir the coffee.

You can also add 20ml of cold water or 20ml of milk and/or sugar if you wish.


5. The coffee is ready to be enjoyed now.

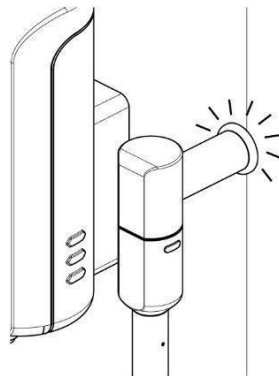


The Extra strong coffee function also allows you to make a double espresso.

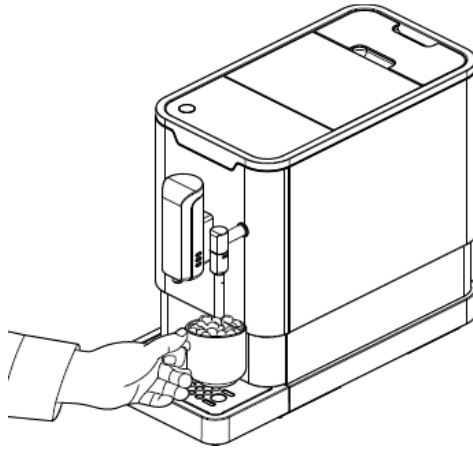
PREPARING FROTHY MILK FOR YOUR COFFEE

1. Prepare one espresso coffee in a larger cup.
2. Turn the steam nozzle towards to the drip tray.

3. Press the steam button . The steam indicator light will flash. Then the appliance will heat up and drain the residual water into the drip tray. Remove this water from the drip tray.



4. After the steam indicator light stops flashing and remains on, place a stainless steel container with milk (approximately 50ml) under the steam nozzle and immerse the steam nozzle about 5cm deep into the container.




You can direct the steam nozzle to the right so that it always remains in contact with the milk.

Care must be taken to ensure the clean air inlet hole remains aligned with the removable metal nozzle. The air inlet hole must be regularly unblocked with the needle provided.

Care must be taken to leave this hole clean and to keep it out of the milk during use, as the air passage helps create the milk foam.


As soon as the complete cycle is finished, rinse the coffee machine circuit with the rinsing function and clean the metal nozzle with a damp microfiber cloth.

5. Press the steam button again . Mind any milk splashes, as they might be very hot.
6. Carefully swirl the container around while the hot steam comes out.
7. When the milk is hot enough and the milk froth has appeared (approximately 30 to 40 seconds per 50ml of milk), press the steam button again to stop the steam.
8. Pour the hot frothy milk into the espresso. Now you can enjoy your coffee.
9. Use a damp towel to clean the steam nozzle (see daily cleaning of the appliance).

WARNING: Let the machine cool down well before dispensing hot water, as the machine will still distribute steam during the first 20 seconds after completing the steam function. There is a risk of burning yourself.

10. To clean the nozzle, unscrew the removable nozzle cover and pull it down to remove it.
11. Remove the removable metal nozzle from the removable nozzle cover for cleaning.
12. Clean both elements with clear water.
13. Put the metal nozzle back on the removable plastic cover. Screw the nozzle cover back to the machine.

HOT WATER

Hot water can be dispensed by pressing the hot water button . The hot water button will light up and the appliance will start preparing the hot water. When the light turns off, the water is ready to serve.

The hot water will come out of the steam nozzle.

Warning: Do not use the hot water function continuously for more than a water tank's water capacity.

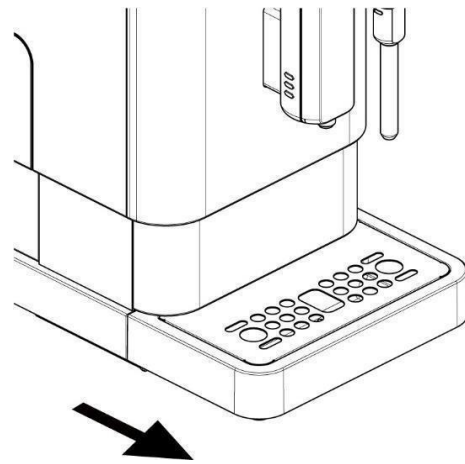
DAILY CLEANING OF THE APPLIANCE

Timely cleaning and maintenance of the appliance is very important to prolong the life of the appliance.

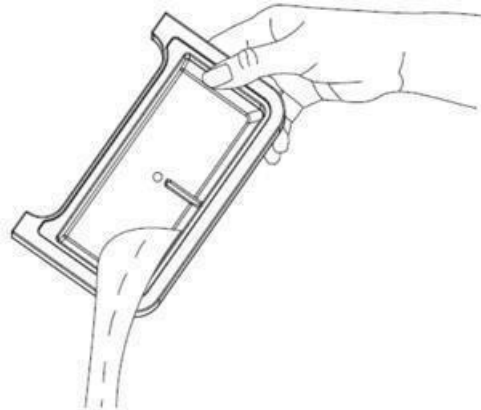
IMPORTANT

Manually rinsing the machine is absolutely essential AT LEAST ONCE PER WEEK. Please see instructions on page 22.

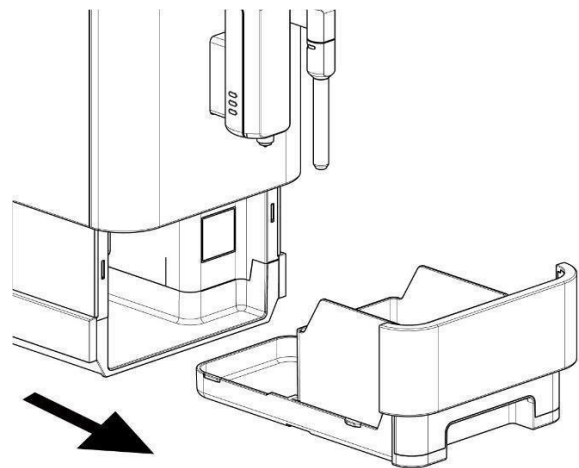
1. Remove the external drip tray.



2. Empty the water inside the drip tray into the sink and wash the drip tray with fresh water. Dry it afterwards.

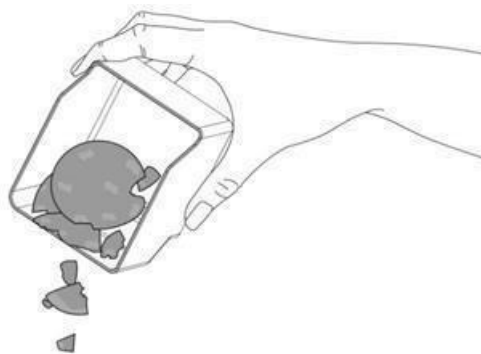


3. Remove the internal drip tray and the coffee grounds container.

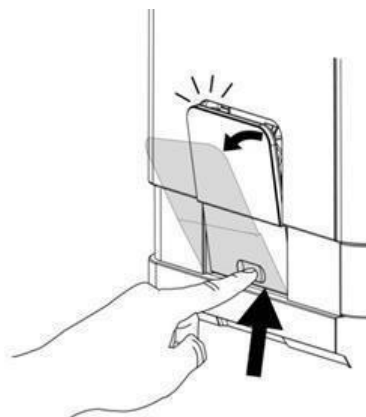


4. Empty the coffee grounds container and wash it with fresh water. Dry it afterwards.

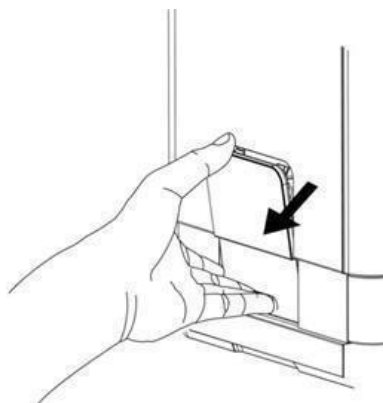
Note: When  lights up, the coffee grounds container needs to be emptied.



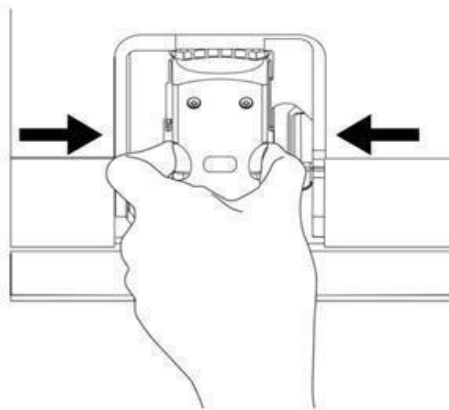
5. Push the recess area of service door.



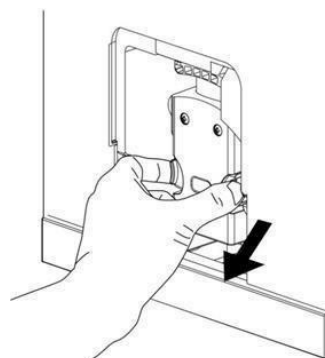
6. Remove the service door.



7. Press the release buttons firmly.




8. Remove the brewer by pressing both release buttons simultaneously and pulling the brewer out.




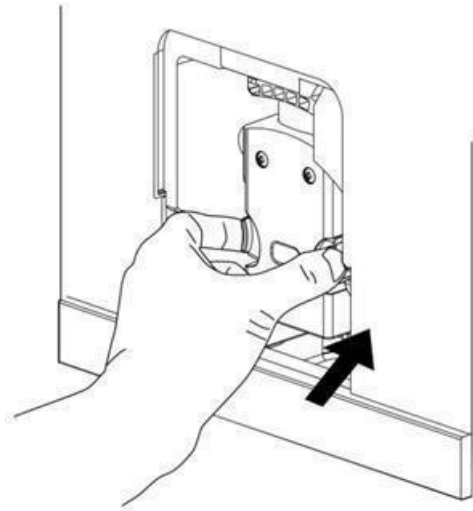
9. Wash the brewer with fresh water.
Dry the brewer afterwards.




10. Insert back the brewer to its original position
and fit the service door back to its original position.

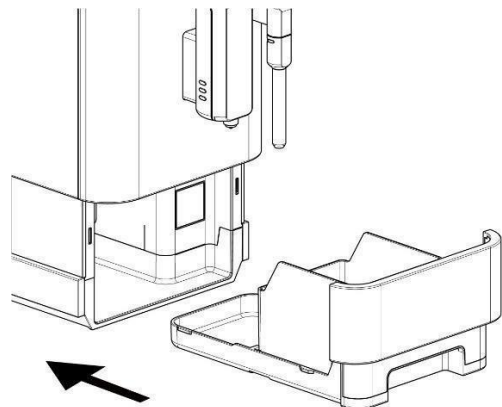
Note: When  lights up stably, it indicates that
the brewer is either missing or installed improperly.

When  is flashing, it indicates that the service
door is either missing or installed improperly.

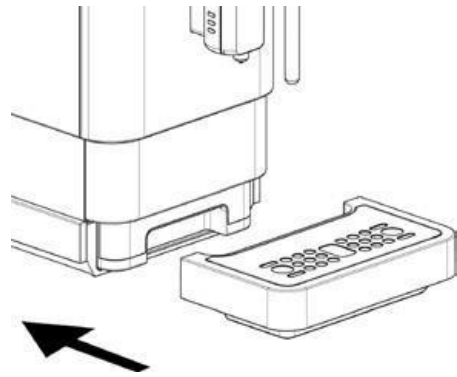


11. Place the coffee grounds container on the
internal drip tray and insert them back to their
original position.

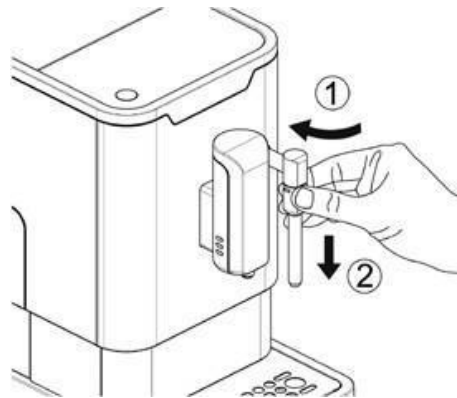
Note: When  is flashing, the coffee grounds
container is missing.



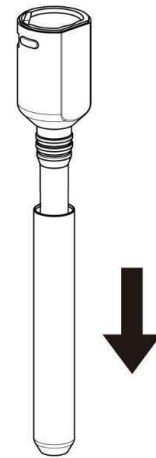
12. Place the external drip tray back to its original position.



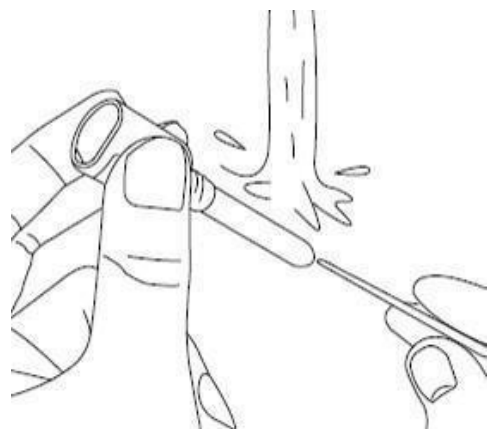
13. Unlock the nozzle cover by turning it to left. Then pull it downward to remove it.



14. Pull the metal tube downward to disassemble the nozzle cover and the metal tube.



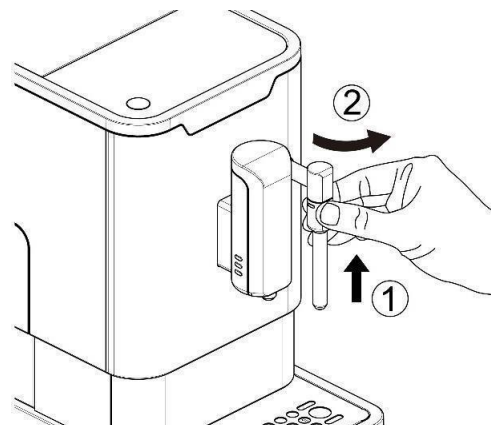
15. Wash the nozzle cover with warm running water and use the needle or bristles of the cleaning brush provided to clean the hole.



16. Wash the metal tube with warm running water and use the needle or bristles of the cleaning brush provided to clean the hole.



17. Assemble the metal tube back to the nozzle cover. Then push upward to place the nozzle cover back. And turn it to the right to lock it in place.



TURNING OFF THE MACHINE

Switch off the appliance by pressing the Power ON/OFF button.

AUTO-SHUT OFF

The Appliance is equipped with auto-shut off function (see FURTHER SETTINGS – III. MODE SELECTION). The default auto-shut off time varies with the mode selected.

FURTHER SETTINGS

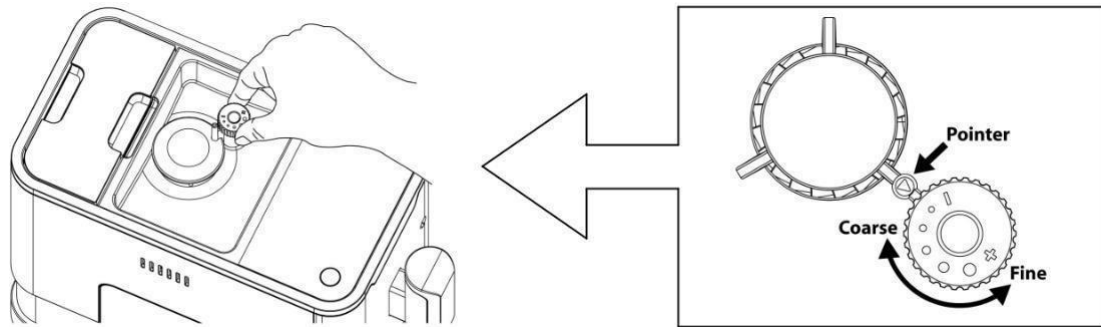
I. ADJUSTING THE VOLUME OF YOUR COFFEE/ HOT WATER

The desired volume of Espresso, Lungo and hot water can be memorised, ranging from 25ml to 250ml.

1. To make your coffee (either Espresso or Lungo) or dispense hot water, press and hold the corresponding button. Hold the button while the appliance is making the drink.
2. When the drink reaches your desired volume, release the button. Two beep sounds will be heard, indicating that the volume is memorised. You can get the exact volume of coffee every time during future use.
3. Reset the volume to factory settings by selecting default settings (see FURTHER SETTINGS - III. MODE SELECTION)

II. GRINDING ADJUSTMENT

You can adjust the grind size to suit your coffee taste by turning the knob in the coffee beans container:



1. Only turn the knob for adjustment when the grinder is in operation.

Caution: Never adjust the grinding when the grinder is not operating. It can damage the grinder.

2. The dots on the adjuster knob indicate the grinding fineness. Turn the knob to the pointer, clockwise for a coarser grind and counterclockwise for a finer grind.



III. MODE SELECTION




The machine is equipped with different settings: Default Setting, ECO Mode and Speed Mode.


ECO Mode helps save energy, whereas the Speed Mode can make coffee more quickly than in default setting.

	Default Setting	Speed Mode	ECO Mode
Illumination light	Yes	Yes	No
Pre-brewing *	Yes	No	Yes
Auto shut off time	20 mins	30 mins	10 mins
Cup volume memory	Yes	Yes	Yes

*The pre-brewing function pre-wets the ground coffee in the brewer with a small amount of water before extraction. This will provide better extraction performance and a coffee with better quality.


1. When the machine is in standby condition, press  and hold for 5 seconds.
2. The  will flash and the following buttons will have the following indications:

	Hot water button 	Espresso button 	Lungo button 
In ECO Mode	Lights on	Flashing	Flashing
In Speed Mode	Flashing	Lights on	Flashing
In Default Setting	Flashing	Flashing	Lights on

- Press the hot water button for ECO mode, Espresso button for Speed mode and Lungo button for Default setting. Two beep sounds will be heard, indicating that the mode is selected.
(Note: If the corresponding button for each mode is pressed, the machine will not respond).
- To keep the settings unchanged, press  or wait for 5 seconds for the machine to return to standby condition.

CLEANING & MAINTENANCE





I. DESCALING


When  is flashing, it indicates that the appliance needs to undergo descaling. The appliance will remain in the best condition if this function is performed at least once a month or more regularly depending on the hardness of water used. Follow the procedures below:

Note: The complete descaling process will take approximately 30 minutes. Do not switch off the appliance or unplug during the process.




- Fill the water tank to the "MAX" level.
- Add one pack of cleaning agent into the water tank.

Important: Do not use vinegar or other cleaning agents to do descaling for this appliance. It can damage the appliance.

- Plug in the appliance.
- Place a large container with at least 1.5L capacity under the coffee spout.
- Switch on the appliance.
- Press and hold  and Espresso button  for 5 seconds. A beep sound will be heard and  and  will be flashing.

7.  will be flashing which indicates that the appliance is undergoing the descaling process. Note: A small amount of water will periodically dispense automatically during the descaling process.

Caution: Hot water can burn or scald. Do stay away.

8. When all water in the water tank is dispensed out,  and Espresso button  will be flashing. Remove all the remaining cleaning agent in the water tank, fill the tank with tap water to the “MAX” level. When water is filled,  will stop flashing. The appliance will continue the descaling process.

9. When the descaling process is completed, the appliance will switch off automatically (in about 5 minutes).

Note: Please ensure that water does not reach the external walls of the water tank or the internal walls of the inside of the coffee machine.

Do not let the machine go into standby while running step 8, otherwise the descaling process will be aborted.

IMPORTANT

- **Non-compliance with cleaning instructions or a lack of maintenance of the machine will terminate the manufacturer's warranty. If needed, repairing the coffee machine will be the subject to a repair quote.**


- **In the same way, abnormal use of the machine or the addition in the grinder of elements other than coffee beans (cocoa, powdered milk, powdered coffee, any liquid etc.) will terminate the manufacturer's warranty. If needed, repairing the coffee machine will be the subject to a repair quote.**


II. EMPTY SYSTEM FUNCTION

It is recommended to use the empty system function before storing or before taking the machine to a repair agent.


1. Switch on the appliance.

2. Press and hold the  button and Lungo button  simultaneously for 5 seconds.

3.  will then be flashing.






4. Remove the water tank from the appliance.  will light up stably to indicate that the empty system is under process. The coffee spout will dispense a small amount of water.

5. After completing the empty system function, the appliance will switch off automatically.

Important: press hot water button  to clean the inner parts of the coffee machine when it is used again.

III. MANUAL RINSING

VERY IMPORTANT: We recommend performing a daily or weekly manual rinsing cycle to clean the coffee nozzle after use. It is also recommended to perform a manual rinsing if the appliance has not been used for a long period of time.

1. Switch on the appliance.
2. Press and hold the Power ON/OFF button  and hot water button  simultaneously for 5 seconds.
3. The hot water button , Espresso button  and Lungo button  will go off. The coffee spout will dispense a small amount of water.

Danger: Hot water will be dispensed from the spout into the external drip tray. Be careful to avoid scalding yourself.

4. After rinsing, the appliance will resume to standby condition.

IV. CLEANING THE APPLIANCE

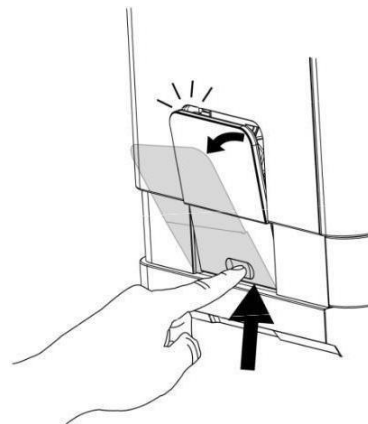
1. Disconnect the power cord from the mains supply outlet.
2. Pour away all water in the internal and external drip tray.
3. Use a damp cloth or non-scratching cleaner to clean the water stains on the appliance.

Important: Never use any abrasive, vinegar or descaling agents not included in the box to clean the appliance.

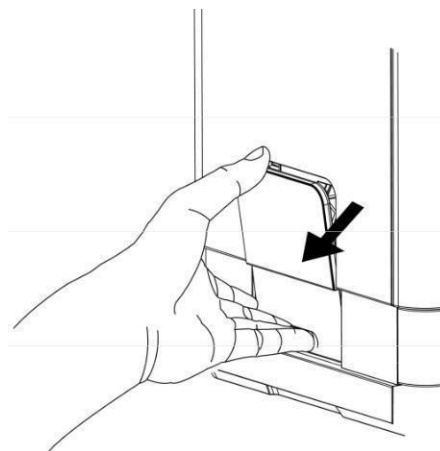
V. CLEANING COFFEE GROUNDS OUTLET

After using the appliance for a long period of time, coffee grounds may stick to the wall of grounds outlet. It is recommended to clean the outlet by following the steps below to ensure that coffee grounds can be delivering to the brewer.

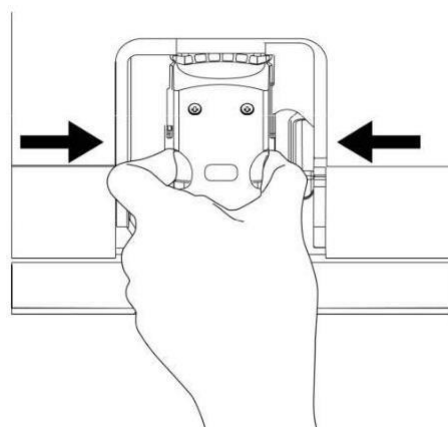
1. Push the recess area of service door.



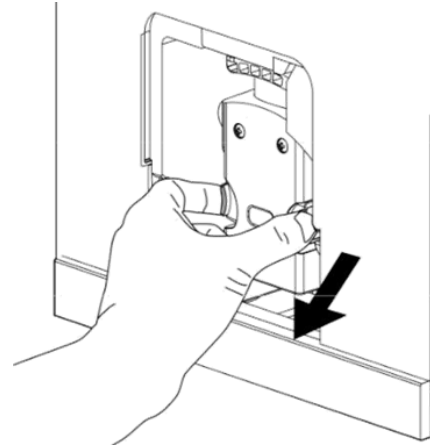
2. Remove the service door.



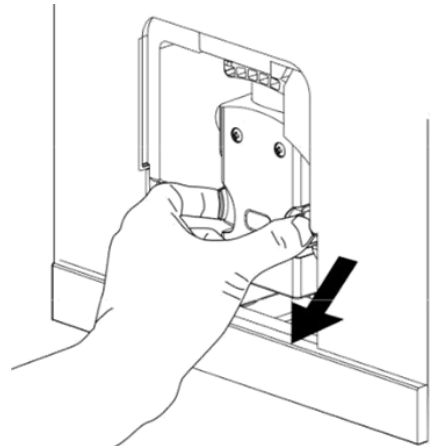
3. Press the release buttons firmly.



4. Remove the brewer by pressing both release buttons simultaneously and pulling the brewer out.



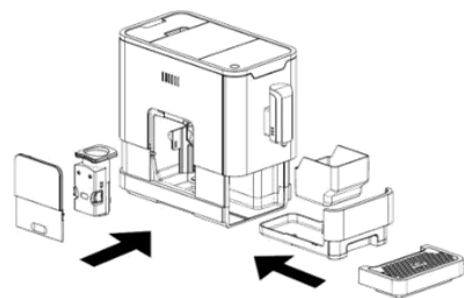
5. Wash the brewer with fresh water.



6. Use the cleaning brush provided to clean the grounds outlet.



7. After completing all cleaning processes, replace all units to original position.



TROUBLESHOOTING

The appliance does not work.

Possible Cause	Solution
<ul style="list-style-type: none">- The appliance is not connected to the mains supply.	<ul style="list-style-type: none">- Plug in and press the Power ON/OFF button.- Check the cord and the plug.

No or delayed response in several trials of pressing the function keys on panel.

Possible Cause	Solution
<ul style="list-style-type: none">- The appliance is under electromagnetic interference.- Dirt on the panel.	<ul style="list-style-type: none">- Unplug the appliance. Restart after a few minutes.- Clean the panel with the cloth provided.

The coffee is not hot enough.

Possible Cause	Solution
<ul style="list-style-type: none">- The cups have not been preheated.- The brewer is too cold.	<ul style="list-style-type: none">- Warm the cups.- Rinse the appliance at least 3 times before making the coffee.

The coffee cannot come out from spout.

Possible Cause	Solution
<ul style="list-style-type: none">- Empty system function might be used before.	<ul style="list-style-type: none">- Press the hot water button until water comes out from spout.

Quality of the first cup of coffee is poor.

Possible Cause	Solution
<ul style="list-style-type: none">- The first run of grinder does not deliver sufficient quantity ground coffee in the brewing unit.	<ul style="list-style-type: none">- Make another cup of coffee, the quality will be improved.

There is no alert when the water tank is removed or the water level in tank is low.

Possible Cause	Solution
<ul style="list-style-type: none">- The area near the water tank connector is wet.	<ul style="list-style-type: none">- Wipe the water around the water tank connector.

The internal drip tray is filled with water.

Possible Cause	Solution
- The ground coffee is too fine, which blocks the water from coming out.	- Adjust the grind size to a coarser level.

Coffee is delivered too slowly or a drop at a time.

Possible Cause	Solution
- The ground coffee is too fine, which blocks the water from coming out.	- Adjust the grind size to a coarser level.

The lack of beans indicator still flashes even there are coffee beans inside the container.

Possible Cause	Solution
- The internal coffee grounds outlet is blocked.	- Follow the steps of section V. CLEANING COFFEE GROUNDS OUTLET.

RECYCLING YOUR ELECTRICALS



At the end of the electrical product's useful life, it should not be disposed of with household waste. Please arrange to take this appliance to recycling points set up around the country.

To find out more information about the recycling of electrical items and the recycling point, please visit www.recycle-more.co.uk .

SCOTT SMART PRODUCTS (UK) LTD
The Lansdowne Building, 2 Lansdowne Road, Croydon, England, CR9 2ER